

Strengthening our fabric



Connecticut Conference
United Church of Christ

SHARED GOALS AND VALUES:

Leadership Development • Identify, affirm, nurture, network, and build the capacity of lay and clergy leaders

Congregational Vitality • Highlight the impact of communities of faith upon their neighbors and the world, to affirm and assist capacity building within congregations, and to nurture covenantal practices among all settings of the Conference

Proclamation, Identity, and Communication • Share the wisdom and the ministries of the Connecticut Conference

Silver Lake Conference Center • In partnership with God and the churches of the Conference, form life-sustaining leaders for the Church and the world

Economic Justice • Protect and raise up the vulnerable among us

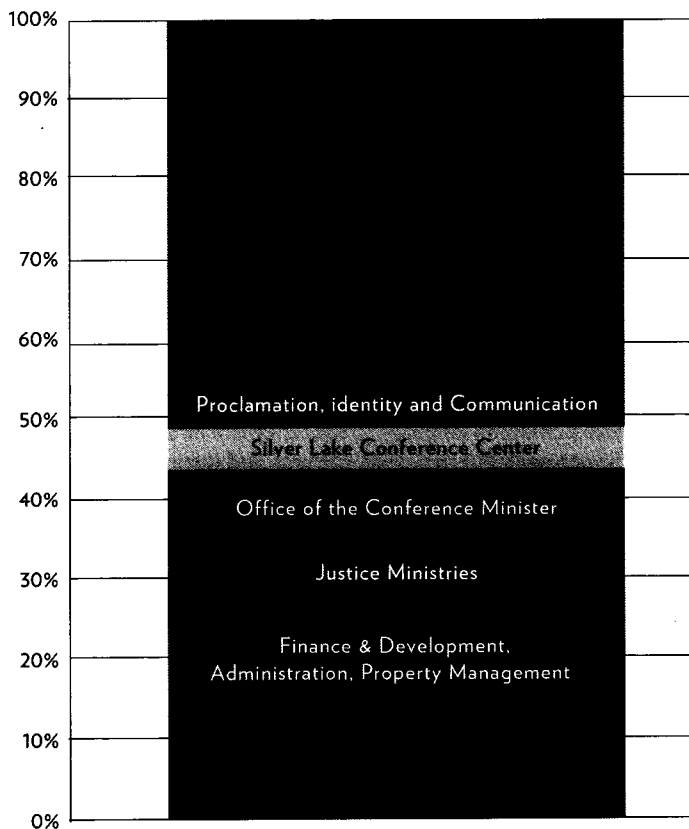
Environmental Justice • Provide transformative, justice-centered approaches to climate change and environmental equity in a forum that empowers individuals and communities to be bold witnesses and leaders

Racial Justice Ministry • Eradicate racism in the personal, interpersonal, cultural and institutional realms

Office of the Conference Minister • Set the vision for, provide spiritual leadership for, and oversee the ministries of the Connecticut Conference

Finance and Development • Administration • Property Management • Support the ministry and mission of the Connecticut Conference with its financial and property resources

ALLOCATIONS OF UNRESTRICTED GIFTS:



* While it is common practice for non-profit organizations to allocate overhead (or operational costs) to program areas, we choose to be more transparent. We understand that many donors prefer to give to specific programs, but without the ongoing support that makes it possible to heat buildings, make copies, track expenses and the like, few of those specific programs could exist. For this reason, we are extremely grateful to our donors who give unrestricted gifts, and we assure our generous friends that each gift contributes to and strengthens the whole.

VITAL ACTIVITIES:

LEADERSHIP DEVELOPMENT AND CONGREGATIONAL VITALITY

46%



We are committed to a lively, robust Church served by engaged, talented leaders.

Regional Ministers advise Association Committees on Ministry to best equip, empower, and support our church leaders. They work with pastors and lay church officials, offering ongoing support and counsel. Clergy Excellence Groups provide a setting to inspire and equip our clergy. Excellence Events will provide unique opportunities for lay and ordained leaders to sharpen their skills and gain new tools. Youth and Young Adult Ministry Programs — including Thinking About Working for God for a Living, the Give Squared service opportunities, the Annual Youth Revival, the Joseph Clemmons Job Training Program, and Youth at Synod — engage young people and cultivate their gifts for leadership. Faith Formation and Leadership professionals and the Ruth Dudley Resource Center support Christian educators in local churches.

Every local church moves through transition at some point in its life — the Church Universal faces great change in these times. Our new Associate Conference Minister for Transitions develops resources and new models of leadership for times of flux, as well as helping us find ways to recruit the best pastoral leaders from across the United Church of Christ.

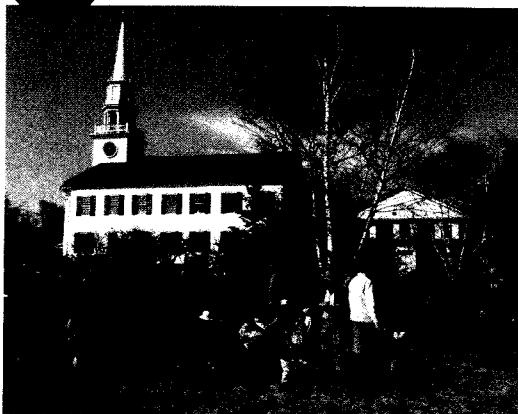
The Conference Registrar offers administrative assistance during transition times to congregations and clergy, and also supports Conference programs of continuing education and ministerial aid.

WORKING INTERDEPENDENTLY, WE MAXIMIZE OUR IMPACT IN THE WORLD

The Conference also lifts up and supports the needs, hopes, and dreams of local church congregations. Conference publications share the stories of our congregations, highlighting ministries that transform churches and their communities, and offering both inspiration and insight for new endeavors. Regional Ministers walk with congregations in times of joy and in times of sorrow — most of all, they walk with them in times that are confusing and uncertain. How is God calling us to be the Body of Christ for the world?

6%

PROCLAMATION, IDENTITY, AND COMMUNICATION



Our people have stories to tell. We tell them with pictures, e-mailings, websites, audio programs, video productions, and right there in person. We share our experience of God in *The Spirit Calendar* and *Spirit-ed Wednesday*;

we share the doings of our people in *CTUCC This Week*, *CTUCC This Month*, and *CTUCC ConferenceCast*. We let you know what's coming in the *CTUCC Flyer*. Our Legislative Advocate visits with lawmakers to remind them that we care about the most vulnerable among us. Our new Leadership Studio gives us new ways to gather people in a virtual space to learn from each other, and to help churches tell their stories in new and exciting ways. Our people have stories to tell; we have the means to tell them.

5%

SILVER LAKE CONFERENCE CENTER



At Silver Lake, we provide spirit-lifting and faith-forming experiences of inclusive and nurturing Christian community. Each summer young people find themselves growing as they live and play as disciples of Jesus Christ. In winter, spring, and fall, people of all

ages grow in faith by stepping into "God's Back Yard." Throughout the year, Silver Lake demonstrates sustainable environmental stewardship of God's creation.

12%

OFFICE OF THE CONFERENCE MINISTER

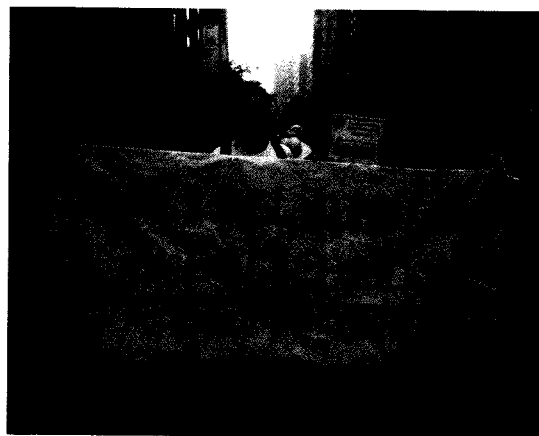
The Conference Minister exercises a ministry of leadership: building relationships, guiding staff, overseeing programming, developing financial resources, and participating in the national setting of the UCC. It is an interdependent ministry:

The Conference Minister works closely with the Board of Directors, other Conference boards, committees, and ministry teams, and has the partnership of the Executive Assistant to do the work of setting the mission, raising the vision, and maintaining the priorities of the Connecticut Conference.

2%

JUSTICE MINISTRIES

"Let justice roll down like waters and righteousness like an ever-flowing stream." (Amos 5:24)



In Christ we are called to participate in God's transforming work, often through challenging conversations and difficult decisions.

Our Legislative Advocate works with state lawmakers,

reminding them that we care about those who struggle to feed their families, access affordable health care, adequately educate their children, and find meaningful employment. We encourage legislation that fosters equal justice for all members of our society. Our Advocate builds coalitions of lay and clergy leaders, connects them with their legislators, and helps express their concerns.

At the UCC Northeast Environmental Justice Center, located at Silver Lake Conference Center, we are called to inspire and motivate individuals and communities to restore and sustain God's creation. We seek means that are responsible, faithful, and just. We strive to foster communities that honor the Earth as a sacred gift. We acknowledge our duty to protect and care for all our planet's inhabitants, species, and ecosystems.

Our Racial Justice trainings offer tools so that people can do the work. They will have a common language to use. They will be able to unmask racism in the personal, interpersonal, cultural, and institutional realms. They will be able to inspire others to engage in the quest for racial justice. Our goal is no less than to eradicate racism.

29%

FINANCE AND DEVELOPMENT • ADMINISTRATIVE • PROPERTY MANAGEMENT

The Finance and Development Team sees that Conference ministries find the resources they need, and that those gifts are well stewarded. Development work concentrates on strengthening covenantal relationships and on encouraging support for Conference ministries. Endowment management, accounting, and budgeting help us extend and direct our resources, while property management sees that our facilities provide hospitable settings for ministry.

Benevolence Giving – 2016

Aids Project New Haven

Café St Ann

Christian Community Action

Clifford Beers

Columbus House

Domestic Violence Services

Downtown Evening Soup Kitchen

Fellowship House

FISH

Habitat Sleeping Giant Build

Hamden Food Bank

Interfaith Volunteer Caregivers

IRIS

Bright Beginnings/Family Read

New Reach

City Seed

Spring Glen Christian Action

Mission Trips

Benevolence Giving – 2nd Part

Global Projects

Our Church's Wider Mission

Gaziantep American Hospital

Tausus American School, Turkey

Kiva

Operating Expense

Contingency

Nursery School Scholarship Fund

Pastor's Discretionary Fund

SGC:

- **15% set benevolence draw from pledges**
- **OCWM is part of 15%**
- **Special giving events like Tools for Hope are not part of 15%**

Guilford UCC:

- 90/10 operations/benevolence split recommended to members
- 20% from weekly plate also goes to benevolence
- OCWM is part of 10%
- Special giving events like Tools for Hope are not part of 10%

Middletown UCC:

- 10% set amount (40% of total income is from endowments)
- OCWM is part of 10%
- Special giving events like Tools for Hope are not part of 10%

Seymour UCC:

- Benevolence giving averages ~10%. At the end of each year Benevolence amount is calculated from what is left over from Operations at 12/31. (~50% of total income is from endowments).

North Haven UCC:

- Benevolence giving averages ~6%. At the end of each year Benevolence amount is calculated from what is left over from Operations at 12/31.

Milford UCC:

- Benevolence giving averages ~6%. At the end of each year Benevolence amount is calculated from what is left over from Operations at 12/31.

Statistics from UCC Yearbook										
a	b	c	d	e	f	g	h	i	j	k
			b+c		d+e	d/f		d/h		d/j
Years 2011-2014	Total OCWM	Other Gifts	Total giving	Operation Expenses	Total Expenses	4 yr Ben. Gvg. avg %	4 yr avg attendance	Ben. Gvg. per attendee	4yr avg membership	Ben. Gvg. per member
Spring Glen	\$40,421	\$21,751	\$62,172	\$359,573	\$421,745	14.74	133	\$467.46	506	\$122.87
Wallingford	\$21,118	\$30,152	\$51,270	\$461,088	\$512,358	10.01	333	\$153.96	1011	\$50.71
Milford	\$13,455	\$23,046	\$36,501	\$491,707	\$528,208	6.91	249	\$146.59	728	\$50.14
Dunbar	\$10,668		\$10,668	\$143,881	\$154,549	6.90	50	\$213.36	126	\$84.67
Redeemer	\$14,151	\$10,617	\$24,768	\$353,040	\$377,808	6.56	77	\$321.66	211	\$117.38
North Haven	\$12,114	\$3,923	\$16,037	\$228,734	\$244,771	6.55	70	\$229.10	357	\$44.92
Woodbridge	\$8,005	\$10,040	\$18,045	\$276,893	\$294,938	6.12	56	\$322.23	250	\$72.18
Orange	\$17,824	\$9,116	\$26,940	\$418,272	\$445,212	6.05	160	\$168.38	653	\$41.26
United Church	\$17,149	\$16,322	\$33,471	\$689,411	\$722,882	4.63	100	\$334.71	166	\$201.63
Mt Carmel	\$870	\$509	\$1,379	\$181,717	\$183,096	0.75	102	\$13.52	272	\$5.07
Years 2011-2014	Total OCWM	Other Gifts	Total giving	Operation Expenses	Total Expenses	4 yr Ben. Gvg. avg %	4 yr avg attendance	Ben. Gvg. per attendee	4yr avg membership	Ben. Gvg. per member
Spring Glen	\$40,421	\$21,751	\$62,172	\$359,573	\$421,745	14.74	133	\$467.46	506	\$122.87
United Church	\$17,149	\$16,322	\$33,471	\$689,411	\$722,882	4.63	100	\$334.71	166	\$201.63
Woodbridge	\$8,005	\$10,040	\$18,045	\$276,893	\$294,938	6.12	56	\$322.23	250	\$72.18
Redeemer	\$14,151	\$10,617	\$24,768	\$353,040	\$377,808	6.56	77	\$321.66	211	\$117.38
North Haven	\$12,114	\$3,923	\$16,037	\$228,734	\$244,771	6.55	70	\$229.10	357	\$44.92
Dunbar	\$10,668		\$10,668	\$143,881	\$154,549	6.90	50	\$213.36	126	\$84.67
Orange	\$17,824	\$9,116	\$26,940	\$418,272	\$445,212	6.05	160	\$168.38	653	\$41.26
Wallingford	\$21,118	\$30,152	\$51,270	\$461,088	\$512,358	10.01	333	\$153.96	1011	\$50.71
Milford	\$13,455	\$23,046	\$36,501	\$491,707	\$528,208	6.91	249	\$146.59	728	\$50.14
Mt Carmel	\$870	\$509	\$1,379	\$181,717	\$183,096	0.75	102	\$13.52	272	\$5.07
Years 2011-2014	Total OCWM	Other Gifts	Total giving	Operation Expenses	Total Expenses	4 yr Ben. Gvg. avg %	4 yr avg attendance	Ben. Gvg. per attendee	4yr avg membership	Ben. Gvg. per member
United Church	\$17,149	\$16,322	\$33,471	\$689,411	\$722,882	4.63	100	\$334.71	166	\$201.63
Spring Glen	\$40,421	\$21,751	\$62,172	\$359,573	\$421,745	14.74	133	\$467.46	506	\$122.87
Redeemer	\$14,151	\$10,617	\$24,768	\$353,040	\$377,808	6.56	77	\$321.66	211	\$117.38
Dunbar	\$10,668		\$10,668	\$143,881	\$154,549	6.90	50	\$213.36	126	\$84.67
Woodbridge	\$8,005	\$10,040	\$18,045	\$276,893	\$294,938	6.12	56	\$322.23	250	\$72.18
Wallingford	\$21,118	\$30,152	\$51,270	\$461,088	\$512,358	10.01	333	\$153.96	1011	\$50.71
Milford	\$13,455	\$23,046	\$36,501	\$491,707	\$528,208	6.91	249	\$146.59	728	\$50.14
North Haven	\$12,114	\$3,923	\$16,037	\$228,734	\$244,771	6.55	70	\$229.10	357	\$44.92
Orange	\$17,824	\$9,116	\$26,940	\$418,272	\$445,212	6.05	160	\$168.38	653	\$41.26
Mt Carmel	\$870	\$509	\$1,379	\$181,717	\$183,096	0.75	102	\$13.52	272	\$5.07